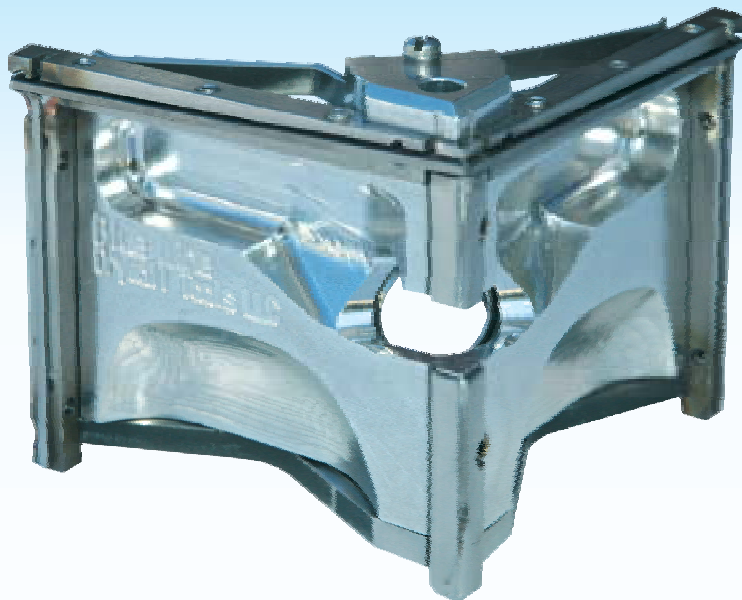


BLUE LINE USA



BLUE LINE CORNER FINISHER

BLUE LINE CORNER FINISHER

The Blue Line Corner Finisher is designed to fill both sides of the internal angle at once whilst feathering the edges of joint compound into the angle. The Blue Line Corner Finishers are available in two different sizes to perform the first and second coat. The smaller Blue Line Corner Finisher is designed to be used after the Blue Line Corner Roller to wipe away excess compound and feather both edges of the angle simultaneously. The wider Blue Line Corner Finisher is designed to be used in conjunction with the Blue Line Corner Box to apply a final coat of compound.

The Blue Line Corner Finisher includes:

- > 2" Blue Line Corner Finisher (first coat)
- > 3" Blue Line Corner Finisher (final coat)

BEFORE USE

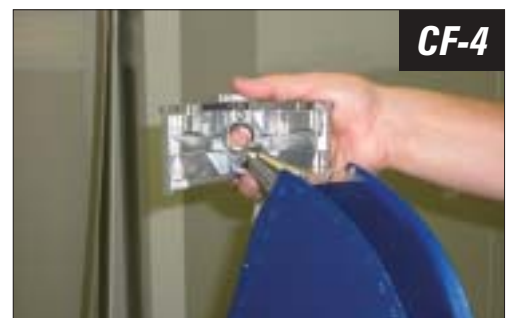
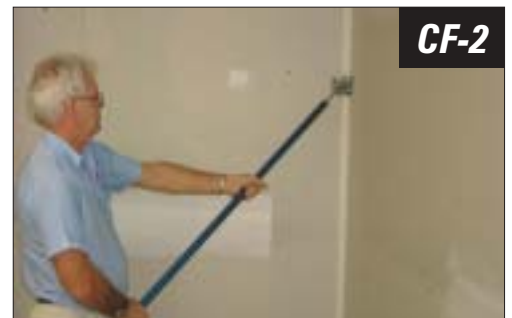
- > Ensure that the Blue Line Corner Finisher is free from any dry joint compound.
- > Check that the Corner Finisher frame moves freely and there is no build up of dry compound behind the frames.

USING THE BLUE LINE CORNER FINISHER

1. Snap the 2" Blue Line Corner Finisher onto the Blue Line Corner Finisher Handle and attach the swivel chain to reduce the risk of damage. **(CF-1)**
2. Stand directly in front of the internal.
3. Place the Blue Line Corner Finisher into the internal about 1" above the floor. Whilst applying pressure run the Blue Line Corner Finisher up the internal approximately 24". Remove the Blue Line Corner Finisher from the wall in an upward sweeping motion.

Tip: It is important that the paper tape has been rolled tightly into the internal. If this has not been done the Corner Finisher blades will tear the paper tape out of the internal.

4. Turn the Blue Line Corner Finisher around and place at the top of the internal. Again, whilst applying pressure run down the internal. The internal should be smooth and all edges of joint compound feathered. **(CF-2 & CF-3)**
5. To apply the final coat, attach the wider Blue Line Corner Finisher to the Blue Line Corner Box and lock the swivel chain. **(CF-4)**
6. Stand directly in front of the internal. It is important to maintain the Blue Line Corner Box nose cone at right angles to the direction of travel and bisect the internal. **(CF-5)**
7. Begin with the vertical angles by placing the Blue Line Corner Finisher at the top of the internal. Whilst applying pressure pull the Blue Line Corner Box down the wall to approximately 24" from the bottom of the joint. **(CF-6)**



- Turn the Blue Line Corner Box around and starting from the bottom of the joint run up the internal. It is important that the Blue Line Corner Box nose cone is at a right angle to the direction of travel. (CF-7)

Tip: It may be necessary to try variations of joint compound consistency to achieve the perfect finish.

Note: The Blue Line Corner Box and Blue Line Corner Finisher does not apply a large amount of joint compound to the angle. The Blue Line Corner Finisher blades are set to distribute enough compound to cover the tape and feather the edges. When using the Blue Line Corner Finisher the paper tape will be visible when the compound is wet. When the compound has dried the angle will have an even finish that requires minimal sanding.

CLEANING

Your Blue Line Corner Finisher should be cleaned after every use to maximize lifespan and maintain optimal performance.

- Clean the outside of the Blue Line Corner finisher with a hose and stiff brush.
- Ensure the areas behind the Blue Line Corner Finisher blades are free from compound by spraying water between the frames and Blue Line Corner Finisher body.

WARRANTY REPAIRS

We have established a network of authorized warranty repair facilities in the western, central and eastern United States as well as Canada.

SERVICING

Your Blue Line Drywall Tools LLC authorized warranty repair facility has a professional workshop with trained staff to carry out all your servicing needs.

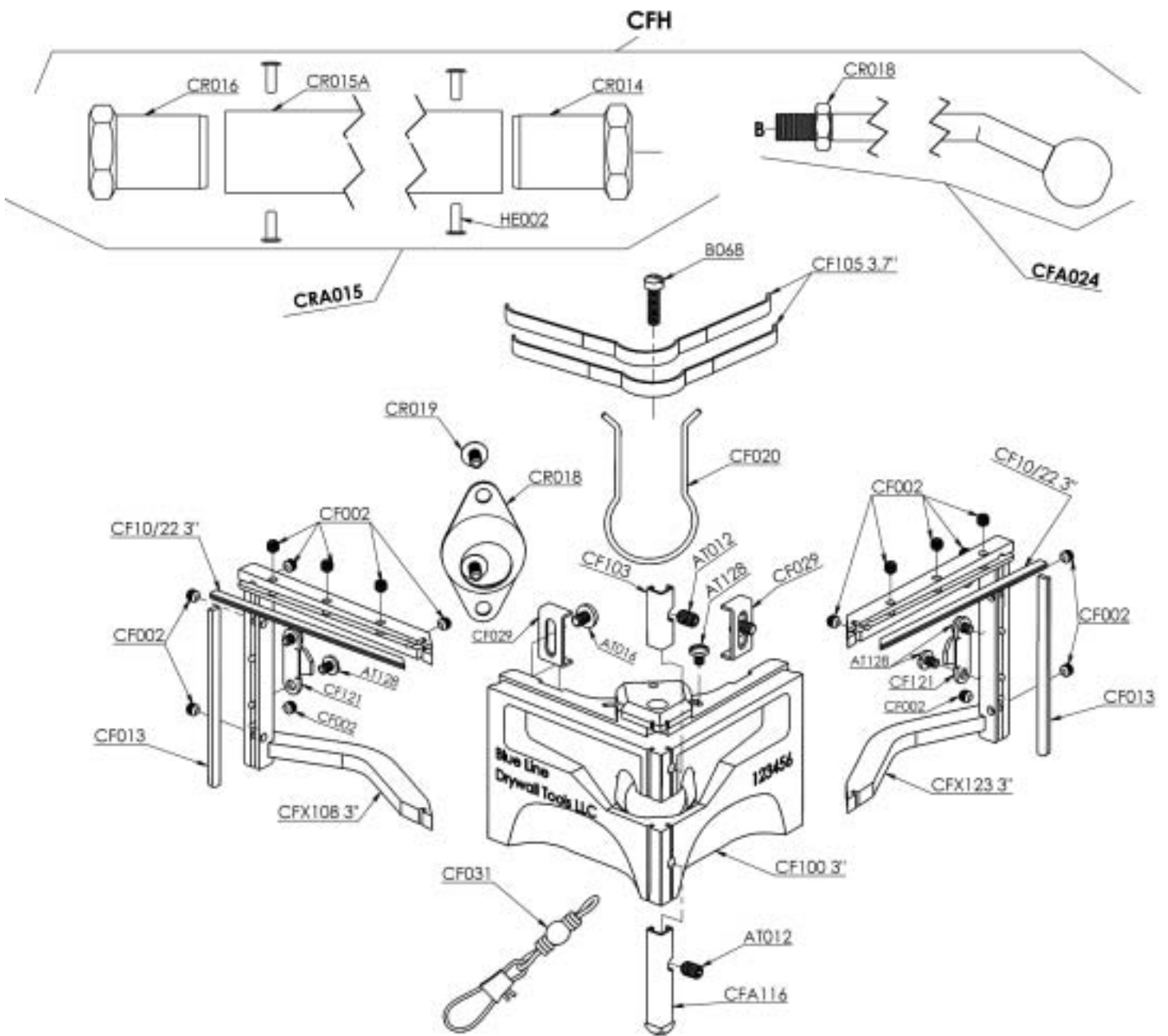
SPARE PARTS

Easy to install maintenance kits are available from your Blue Line Drywall Tools LLC distributor. All parts are available, some may require ordering.

CARE OF YOUR TOOLS

We recommend Readymix Jointing Compounds. Chemically fast setting compounds may only be used in the Blue Line Drywall Tools Pump, Flat Boxes, Nail Spotters, and Corner Box. Chemically fast setting compounds must not be used in the Automatic Taper. Always clean and lubricate your Blue Line Drywall Tools to maintain maximum efficiency.





For more information, call the order desk at (800) 423-1806

www.bluelineusa.com

1250 South Wilson Way, Suite B-10 • Stockton, California 95205 • (800) 423-1806 • (209) 942-1351 • Fax (209) 942-2817